

# 15.04.15



# Aims of CLAHRC WM

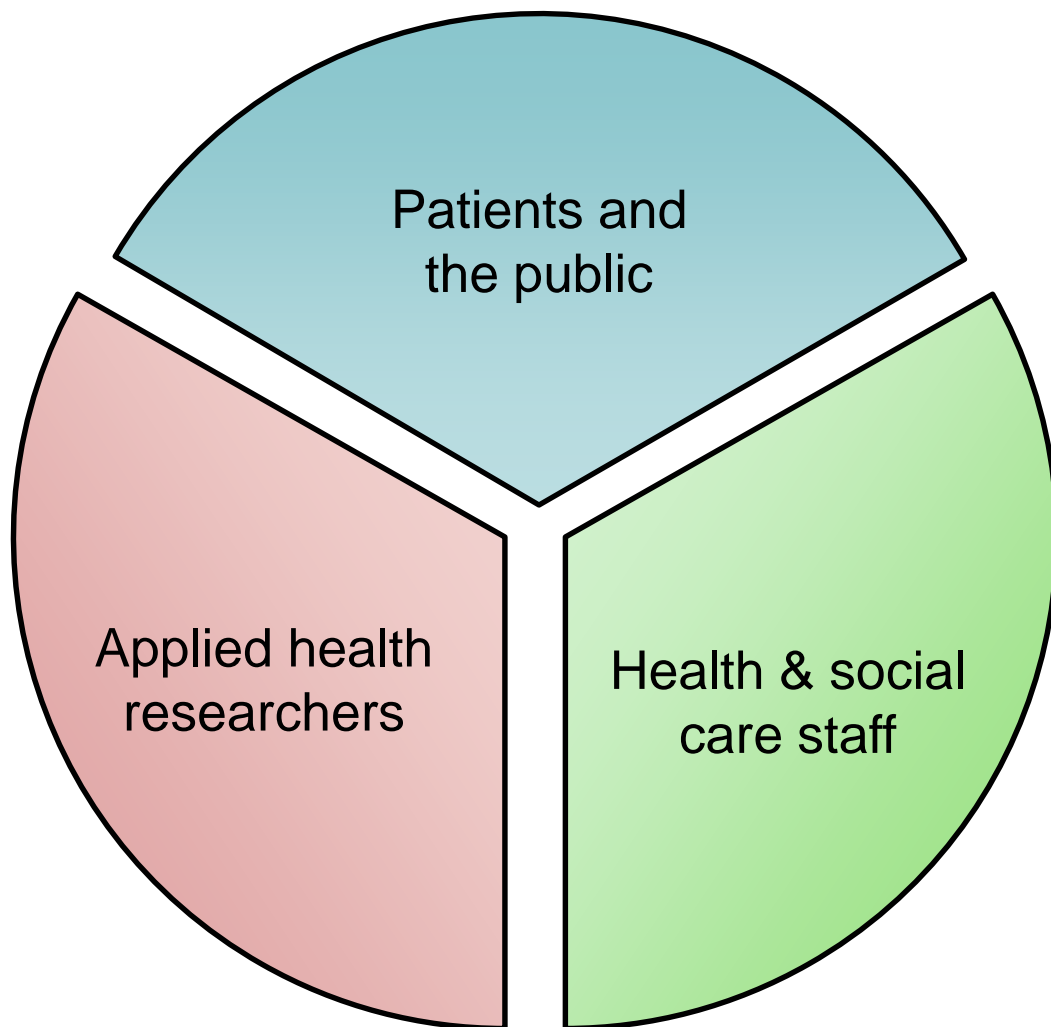
- Improve services to benefit patients.
- Conduct high quality and imaginative evaluations.

To build capacity for a  
**self-sustaining system**, where the  
**CLAHRC way of working**  
has become the natural way of working.

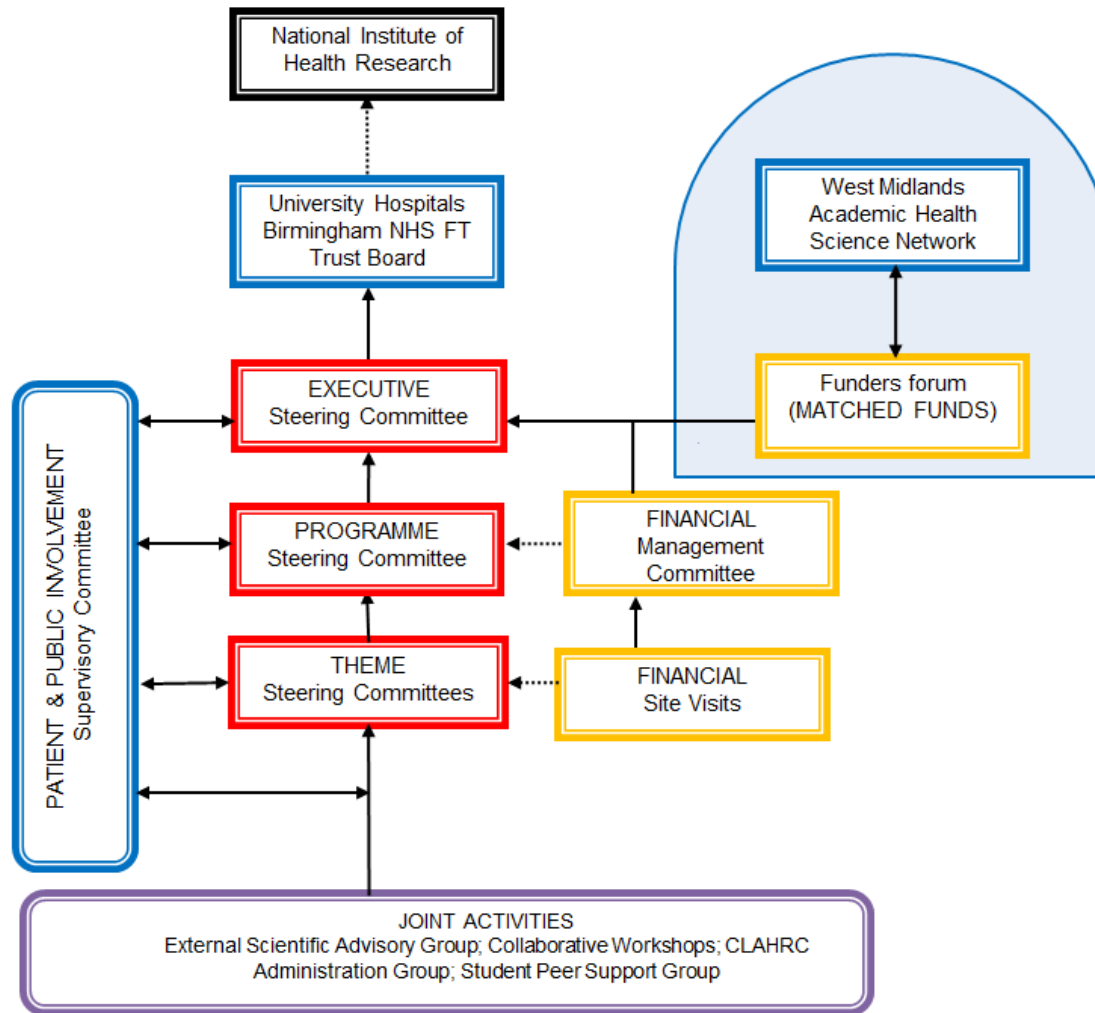
# Background

- **£10m** funding from National Institute of Health Research (NIHR)
- **£20.6m** matched funds from NHS service providers and Local Authorities
- 1 of 13 successful collaborations in England commencing on 1<sup>st</sup> January 2014 for 5 years
- Builds on successful CLAHRC pilot

# The Collaboration



# Management Structure



# Strengths of CLAHRC WM

Top business and  
management  
schools

Research  
Methods

Simulation  
studies

Patient & Public  
Involvement

CLAHRC  
International

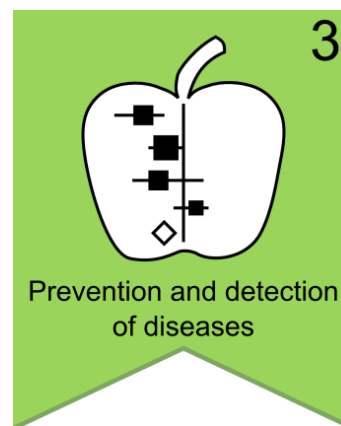
Public  
Engagement in  
applied health  
research

# Building a CLAHRC Community



# Themes in CLAHRC WM

## Service themes:



## Cross cutting and supporting themes:





# Examples of success



Radical redesign of mental health services for young people leading to re-commissioning of services 0-25 years in Birmingham.



Reducing medication errors - UHBFT



Targeted case finding for patients at high risk of CVD in primary care



ELSIPs trial – lay support in pregnancy improves postpartum mental health



Housing and Health

# CLAHRC / AHSN projects

## Innovation & adoption

- Monitoring & improving safety of care
- Improving care – learning from deaths
- Hydrate for health

## Integrated care

- Roll out across WM of evidenced-based programme of stratified care for back pain

# CLAHRC / AHSN projects

## Long term conditions

- A Crash Course for GP Receptionists on the recognition and handling of Acute Stroke
- Integrated working between General Practices and Adult Social Work Teams

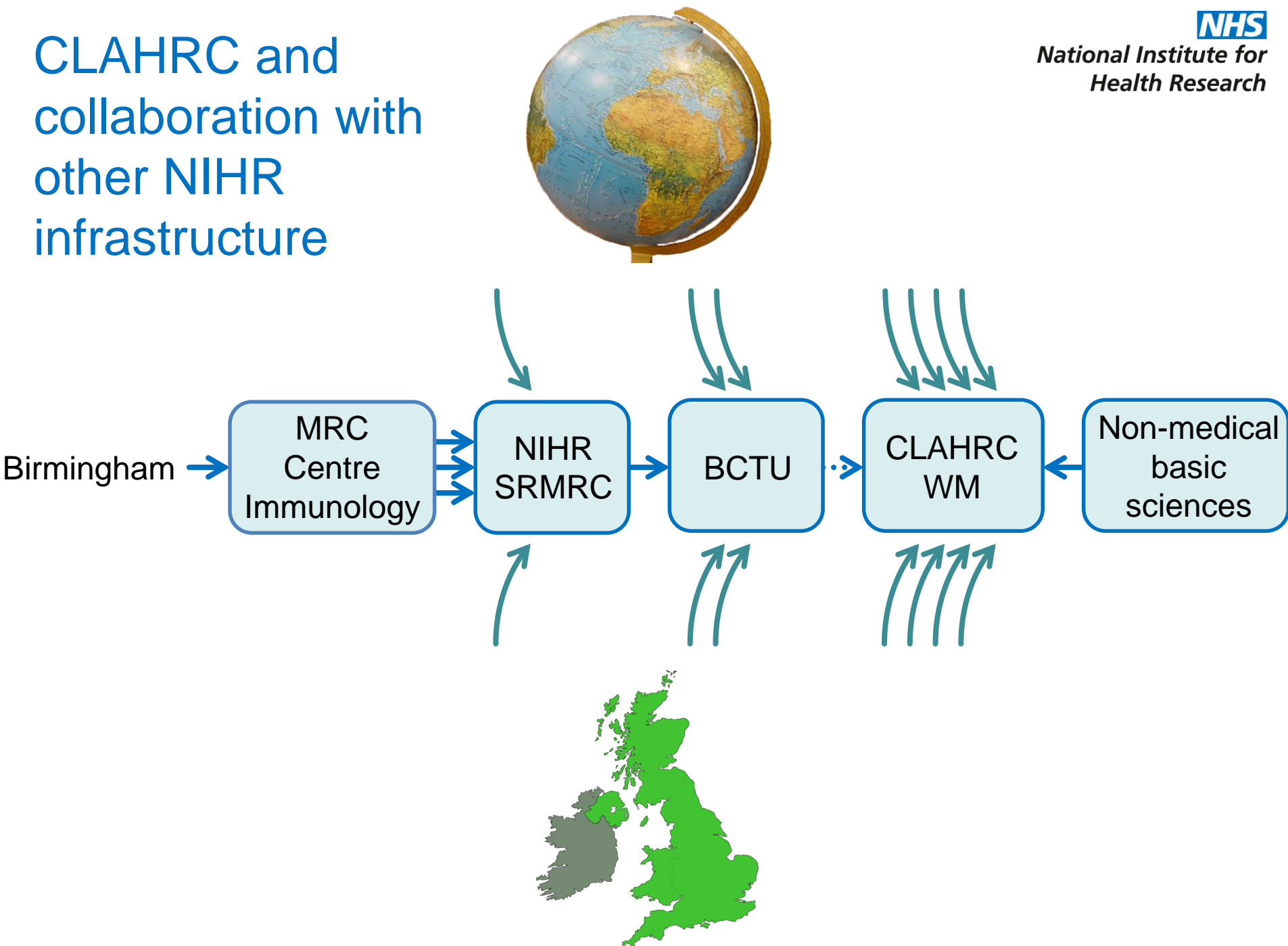
## Mental health

- Youth pathway implementation

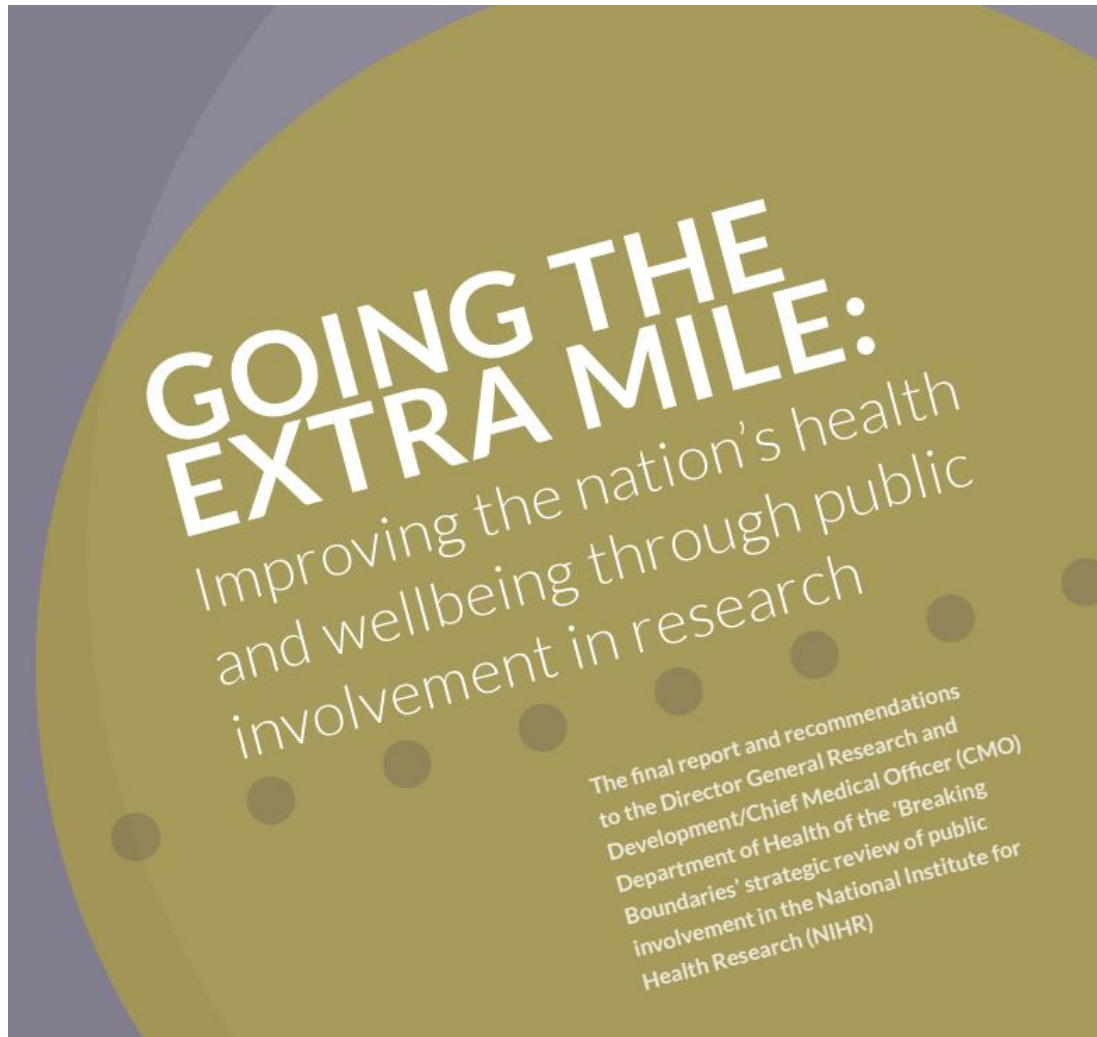
## Drug safety

- Electronic prescribing

# CLAHRC and collaboration with other NIHR infrastructure



# Going the extra mile...



# Blogs & BITES

 Share  Tweet  Forward to Friend

## NIHR CLAHRC West Midlands News Blog



*This work is funded by the National Institute for Health Research (NIHR) Collaboration for Leadership in Applied Health Research and Care (CLAHRC) West Midlands.*

*The views expressed are those of the author(s) and not necessarily those of the NHS, the NIHR or the Department of Health*

Welcome to the latest issue of your NIHR CLAHRC West Midlands News Blog.



In this issue we look at [endovascular clot removal](#) in stroke patients; the role of [lay community health workers](#); [demystifying theory](#) in applied research; measuring [teamwork](#); and provision for [mental illnesses](#).

We also detail [PPI involvement](#) in Theme 2, profile [Prof. Swaran Singh](#), and bring you the [latest news, events](#), and our [CLAHRC WM Quiz](#). Finally, we have details of our [latest publications and grants](#).

We hope that you find these posts of interest, and we welcome any comments. You can find previous issues of our News Blog [here](#).

## CLAHRC BITEs



# Contacts

**The Revd Dr Barry Clark**

Chair of PPI Supervisory Committee

PPI Advisor to Youth Mental Health Services - Theme 2

**Nathalie Maillard**

Head of Programme Delivery

E: [n.maillard@warwick.ac.uk](mailto:n.maillard@warwick.ac.uk) / 07772 357252

Tweet us @CLAHRC\_WM

See our website [www.clahrc-wm.nihr.ac.uk](http://www.clahrc-wm.nihr.ac.uk) (NB under development)

View and subscribed to our News Blog <http://clahrcwmblog.wordpress.com>

(PPI section of the News Blog will be of interest)