



STEPPING OUT

FAITH, MENTAL HEALTH AND FRIENDLY PLACES

BIRMINGHAM 28TH NOVEMBER 2014



- Dept of Health – Strategic Partner
 - Faith and health
- Dept of Communities and Local Government
 - Funder of Faith Based Social Action – TiS – Together in service
 - Creative English –programme & Innovation fund
- Appg on Faith & Society
- *Voice of the Sensible* – Solution focused

WHAT DID ROME EVER DO FOR US?

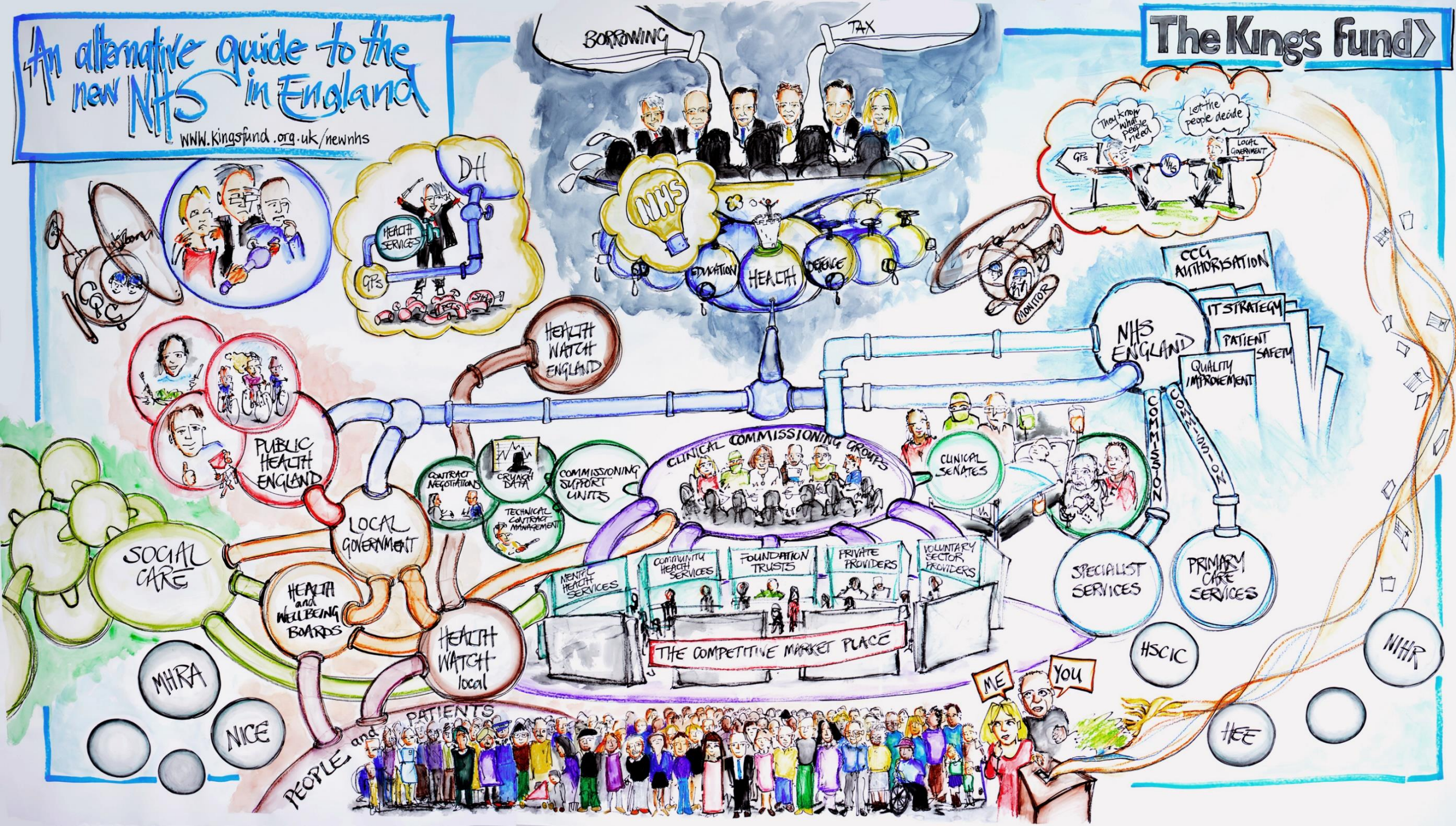


Minister of Health
Norman Lamb MP
Endorses 'Friendly Places'

An alternative guide to the new NHS in England

www.kingsfund.org.uk/newnhs

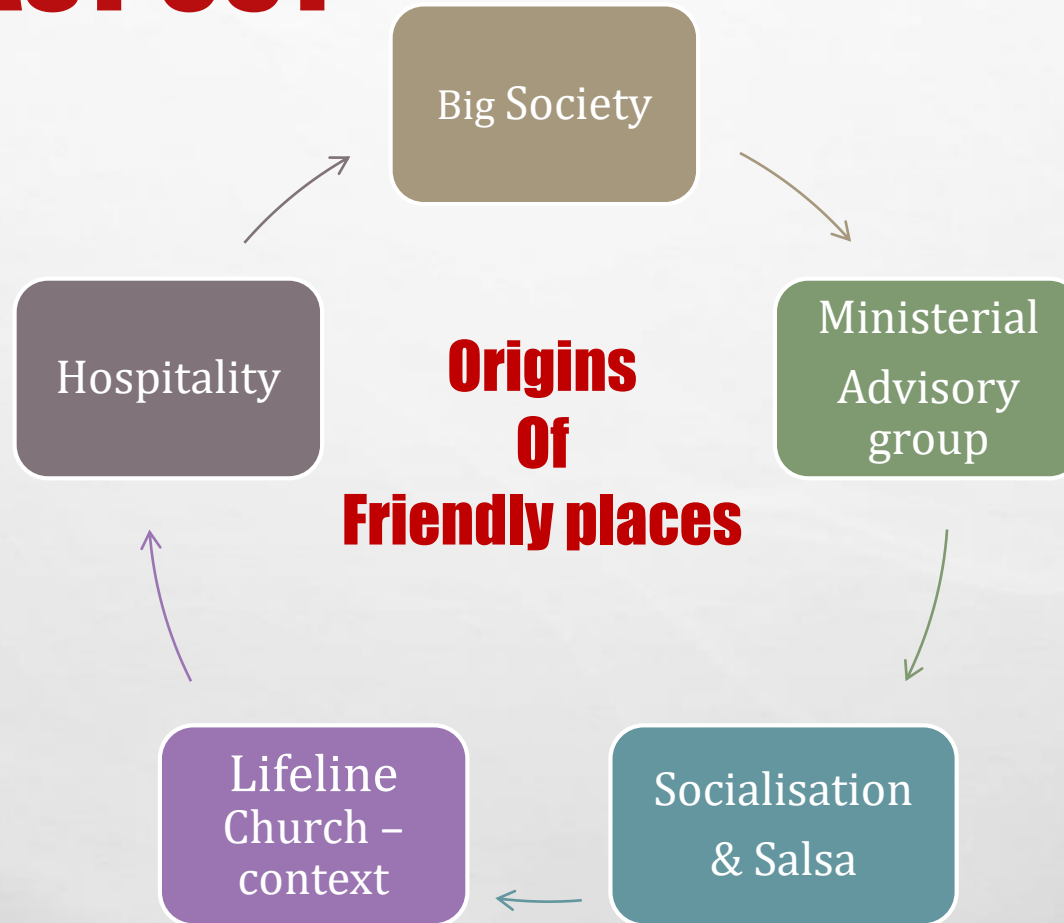
The Kings fund



FIRST IN AND LAST OUT



Pledge Wall



<http://www.faithaction.net/areas-of-work/friendly-places/>

IN OTHER WORDSHOSPITALITY

- What's in your hands (Toddlers groups, opportunities to serve)
- 'Supporting the meeting'
- Service/ jobs worth
- *Traditionitis*
- *Faditis*

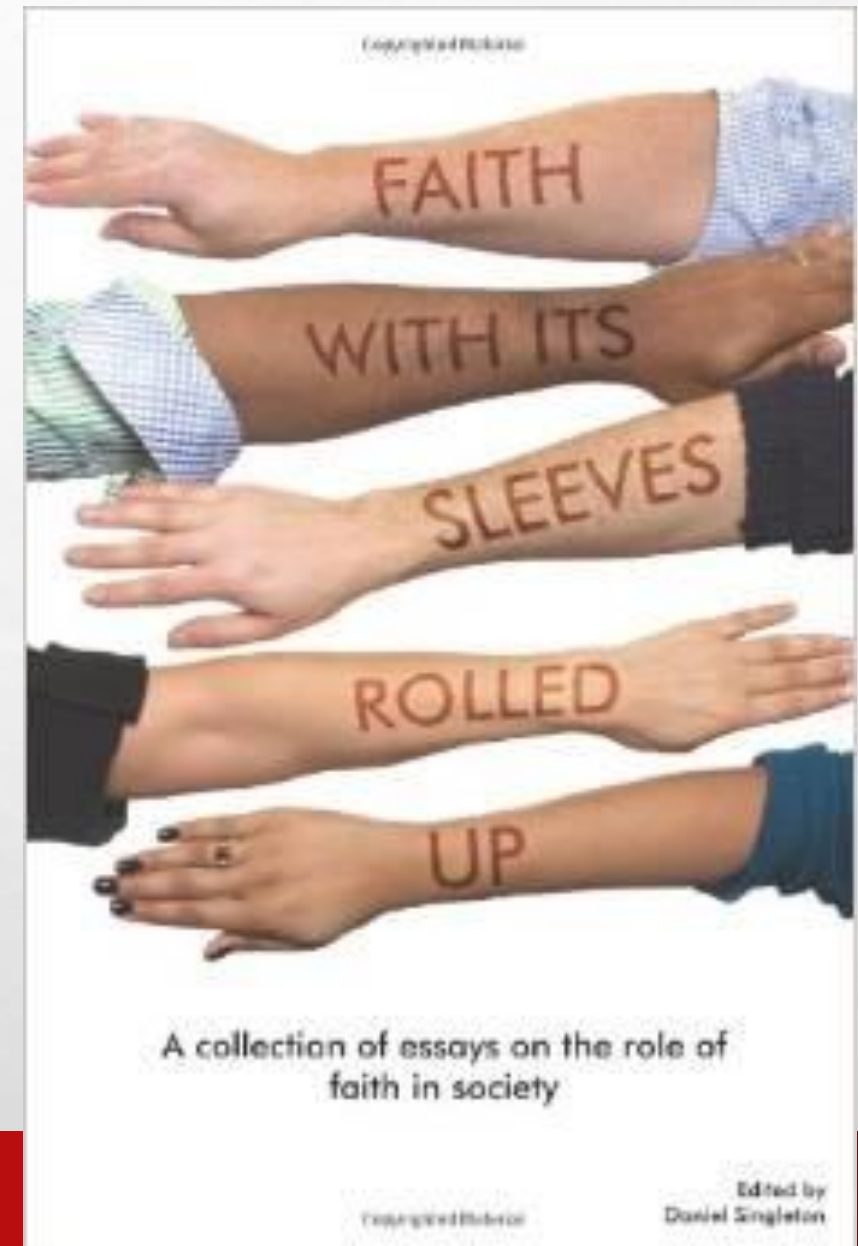


PROVIDING AGENCY

- Faith as advocate, friend and support

*'A problem becomes as crisis
when I don't have a friend
to call'*

- Faith as intelligent local provider of 'services to the public'
- Whole person care, is key to Jeremy Hunt MP priority
'Quality of Care'



COVENANT & #myManifesto

- Faith;
 - *Too Significant to ignore* – **Voice**
 - *Reaches the parts nothing else can* – **Advocacy**
 - *Money well spent* – **Solution focused providers**
- Facilitate relationship between Faith Communities and Commissioners & Local Gov
- www.faithandsociety.org
- Faith Too Significant to Ignore conference Earlier in November
<http://www.faithaction.net/events/faith-too-significant-to-ignore/>
- Faith Manifesto #MyManifesto
- If your not counted you don't count!
<http://www.cinnamonnetwork.co.uk/cinnamon-faith-action-audits/>

FAITHACTION – HEALTH & WELL-BEING TEAM

Call us on 0845 094 6350

Follow us on twitter - @faithactionnet

www.faithaction.net

Daniel Singleton – National Executive Director

daniel.singleton@faithaction.net

@Dsingleton_

Rodie Garland – Programme & Policy Officer

Rodie.Garland@faithaction.net

Naomi Stephens – Project support officer

Naomi.Stephens@faithaction.net